



18,000 gal
CAPACITY

100" OD
TANK DIAMETER

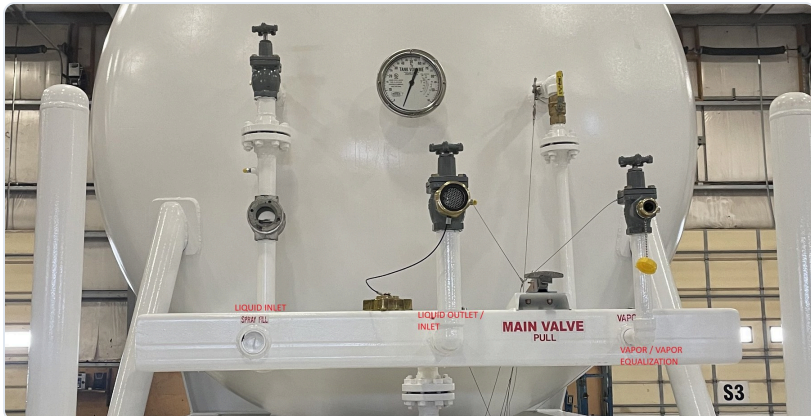
53'-0"
OVERALL LENGTH

250 PSI
WORKING PRESSURE

SPECIFICATIONS

- 18,000 gallon propane skid tank
- Roll-On / Roll-Off custom skid
- ASME pressure vessel · 100" OD × 46'-6" OAL
- SA-516-70 heads & shell · 250 PSI working pressure
- Standard couplings · blast & prime finish
- 9'-3 3/8" overall height · 11'-3/8" tangent height
- 6"×12"×1/2" tank pads (×12) on W12×72 I-beams
- 1 1/4" drain line · internal valve + inline isolation valve

VALVE MANIFOLD



Liquid inlet / spray fill · liquid outlet–inlet · main valve · vapor / vapor equalization.

FIELD DEPLOYMENT



18,000-gal skid tank staged on roll-on / roll-off frame.

ENGINEERING DETAIL

- Saddle wedges (×6) · PRV · liquid inlet spray bar · vapor stand pipe
- 6"×12"×1/2" tank pads (×12) welded to W12×72 I-beams
- 1 1/4" drain line · internal valve + inline isolation
- Standard couplings · blast & prime finish

Ready to deploy?

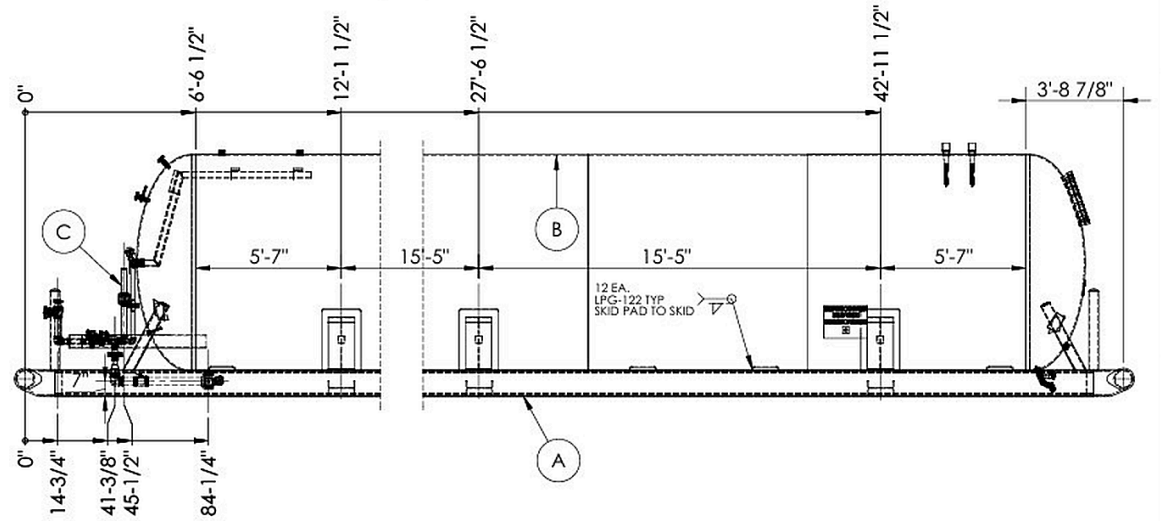
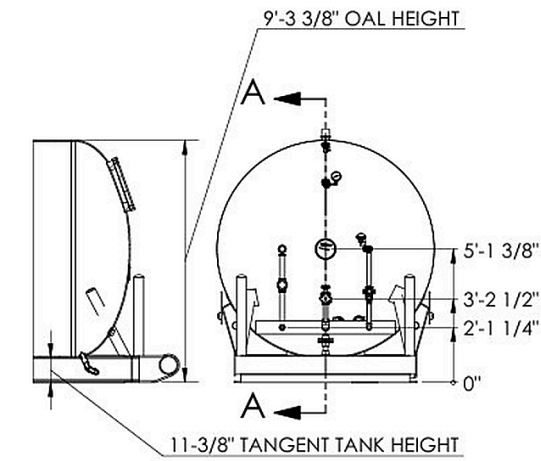
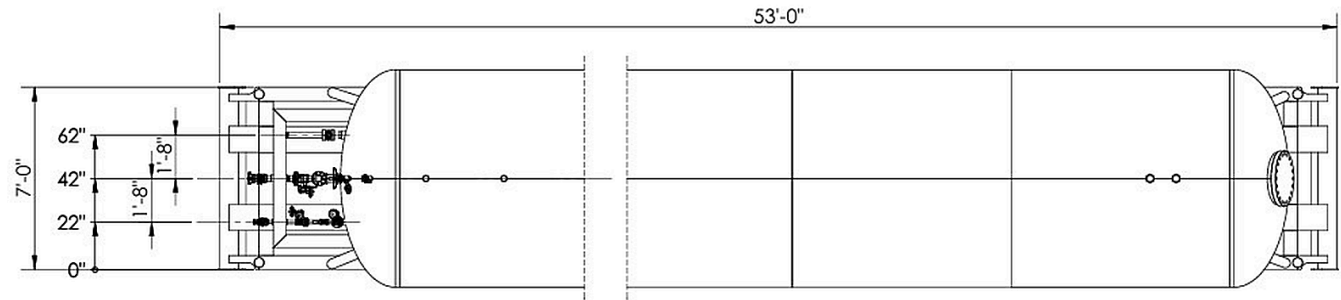
Custom term sheet within 48 hours.

[Request a Term Sheet](#)

sales@vpventures.com

ENGINEERING DRAWING **Assembly & Dimensions**

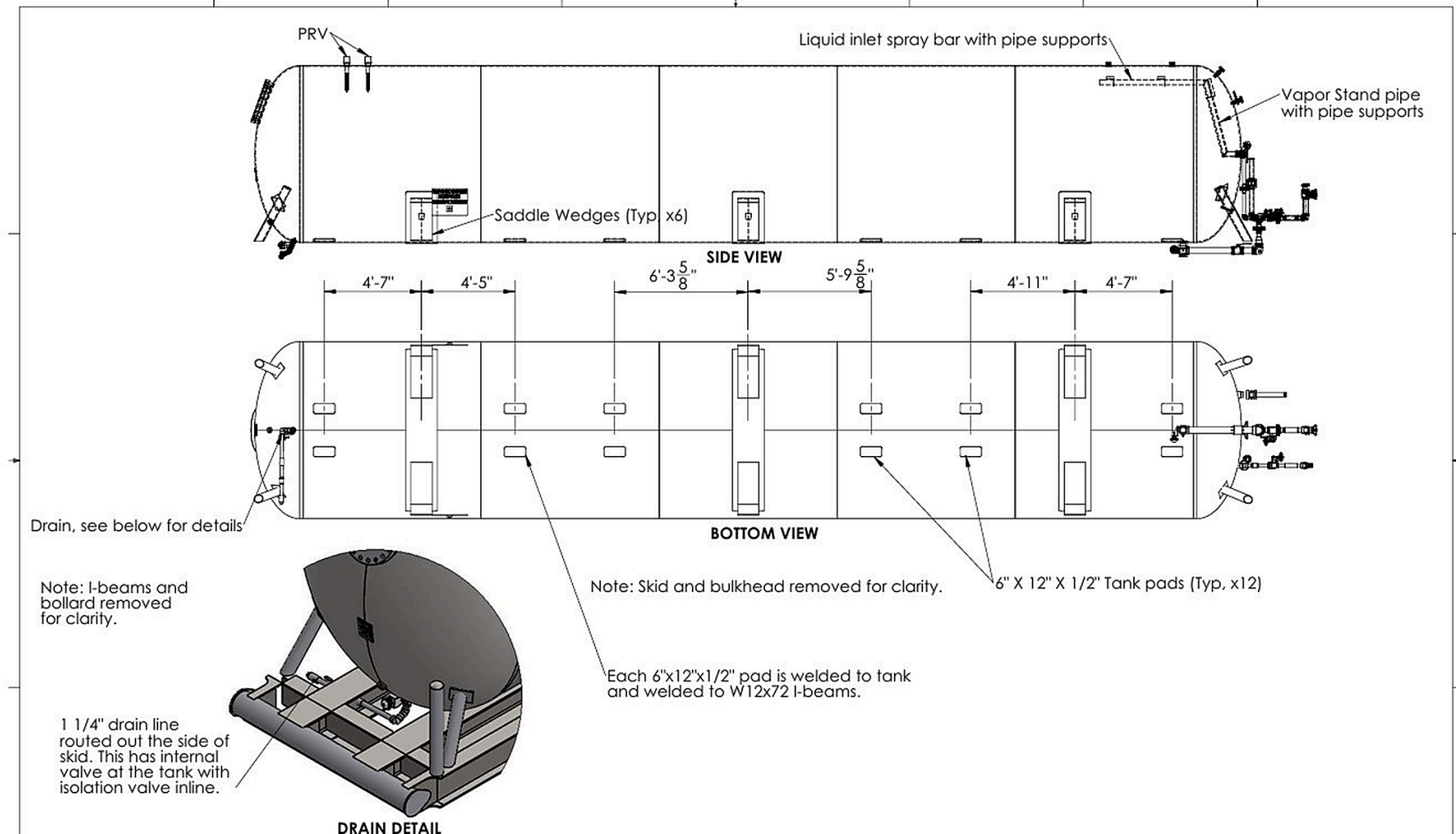
ITEM	PART NUMBER	DESCRIPTION	SIZE / SHAPE	UNITS	MATERIAL	QTY.
A	24-150 Skid Assembly	Roll-ON / Roll-Off Custom Skid	AS SKETCHED	ft. / in.	AS SKETCHED	1
B	24-150 Tank Assembly	18,000 Gallon Propane Tank 24150	100"OD x 46'6 OAL	ft. / in.	AS SKETCHED	1
C	24-150 PIPING	SKID PIPING	AS SKETCHED	ft. / in.	AS SKETCHED	1



SECTION A-A

Section A-A · End elevation · Side elevation with reference dimensions

ENGINEERING DETAIL Side View · Bottom View · Drain Detail



Side & bottom views · saddle wedge layout · 1 1/4" drain detail (Detail A)