

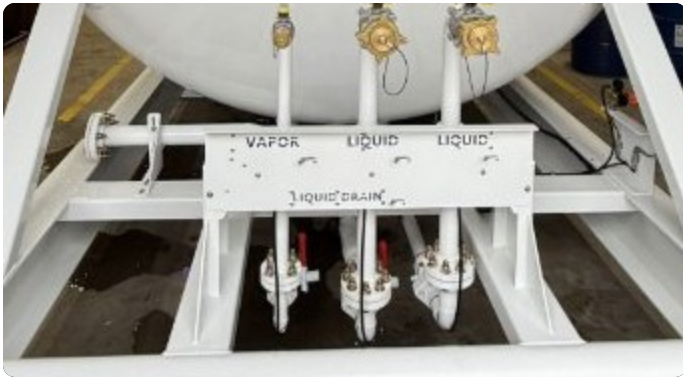


<b>30,000 gal</b> CAPACITY	<b>131" OD</b> TANK DIAMETER	<b>50'-4"</b> OVERALL LENGTH	<b>12'-6 1/8"</b> OVERALL HEIGHT	<b>250 PSI</b> WORKING PRESSURE	<b>45,500 lb</b> DRY WEIGHT
-------------------------------	---------------------------------	---------------------------------	-------------------------------------	------------------------------------	--------------------------------

**SPECIFICATIONS**

- 30,000 gallon propane skid tank
- Roll-On / Roll-Off custom skid
- ASME pressure vessel · 131" OD · 250 PSI working pressure
- SA-516-70 heads & shell · ~45,500 lb dry weight
- Standard couplings · blast & prime finish
- 12'-6 1/8" overall height · 10'-11" tank height
- Tank pads welded to I-beam skid frame
- 1 1/4" drain line · internal valve + inline isolation valve

**VALVE MANIFOLD**



Vapor & liquid couplings · main valves · liquid drain manifold.

**FIELD DEPLOYMENT**



30,000-gal skid tank staged on roll-on / roll-off frame.

**ENGINEERING DETAIL**

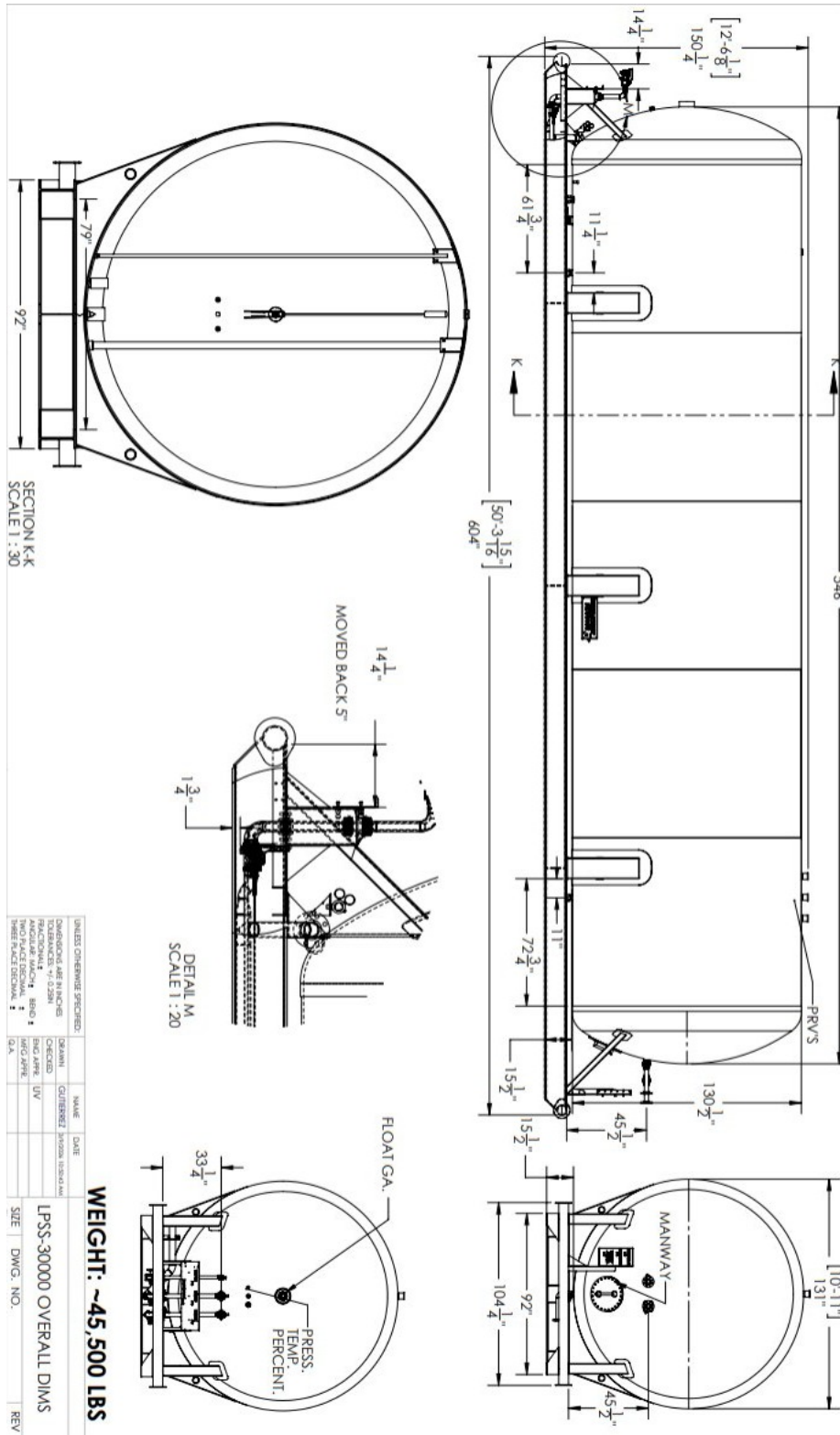
- Saddle wedges · PRV's · liquid inlet spray bar · vapor stand pipe
- Manway · float gauge · pressure / temp / percent gauge
- 92" I-beam centers · 104 1/4" skid frame width
- Standard couplings · blast & prime finish

**Ready to deploy?**  
Custom term sheet within 48 hours.

[Request a Term Sheet](#)

[sales@vpventures.com](mailto:sales@vpventures.com)

## ENGINEERING DRAWING Assembly & Overall Dimensions



LPSS-30000 · end elevation · side elevation · valve detail · float-gauge detail · overall dimensions.